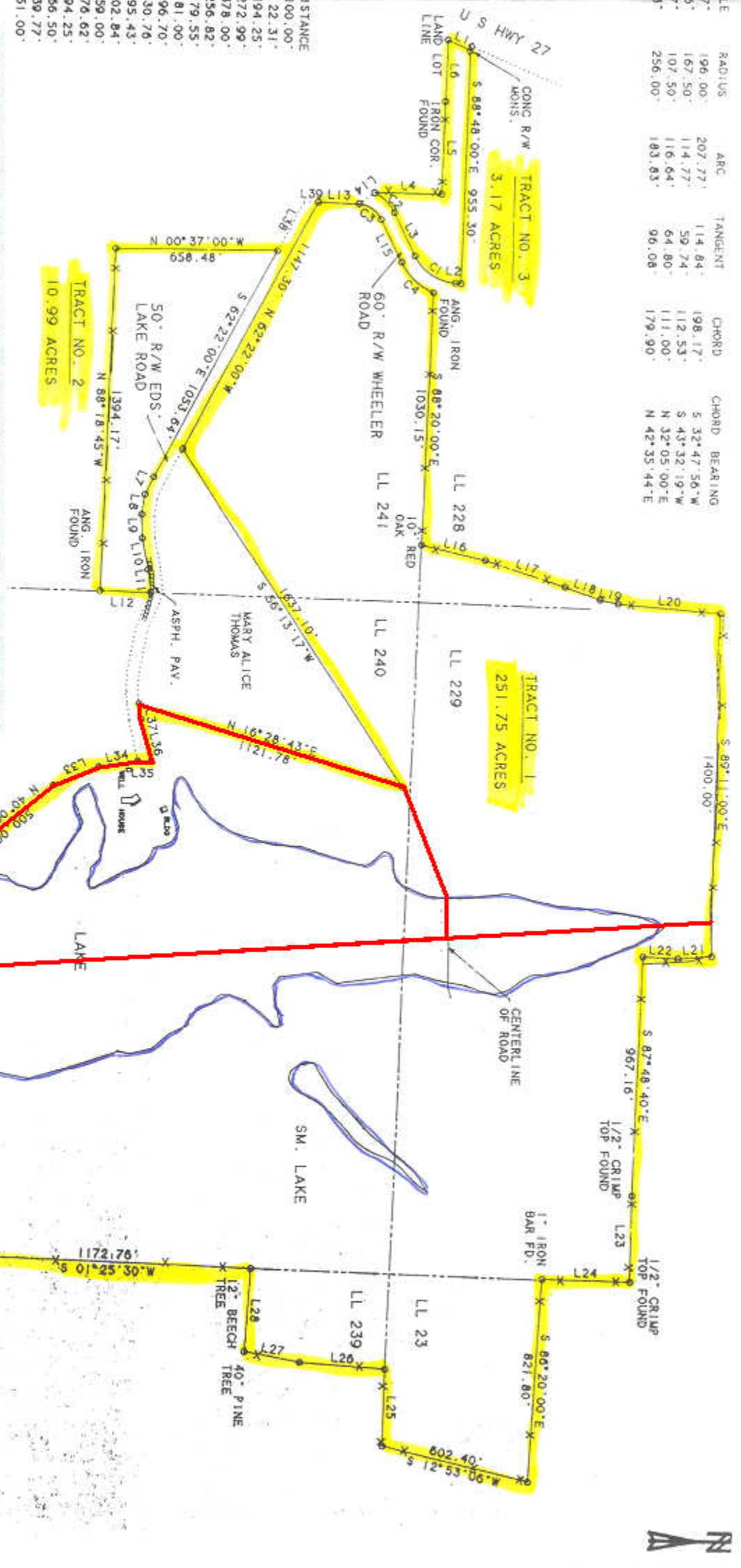


RADIUS	ARC	TANGENT	CHORD	CHORD BEARING
196.00	207.77'	114.84'	198.17'	S 32°47'56"W
167.50	114.77'	59.74'	112.53'	S 43°32'19"W
107.50	116.64'	64.80'	111.00'	N 32°05'00"E
256.00	183.83'	90.08'	179.90'	N 42°35'44"E



OPTION 1: If you take EVERYTHING LEFT of the red line that splits the lake, from top to bottom, that's 119 acres. Owner will let the entire left part go for \$15,000 / acre (about \$1,785,000.00). This one is the overall preferred option. Owner would love to see this go as a "Sportsmans Club", Private Estate, or Summer Camp sort of thing.

OPTION 2: The lower BOX AREA HIGHLIGHTED IN RED is approximately 40 acres, including the Lake portion. It also includes the house. Owner will let this part go for around \$900,000. That's a really nice little piece of estate.

