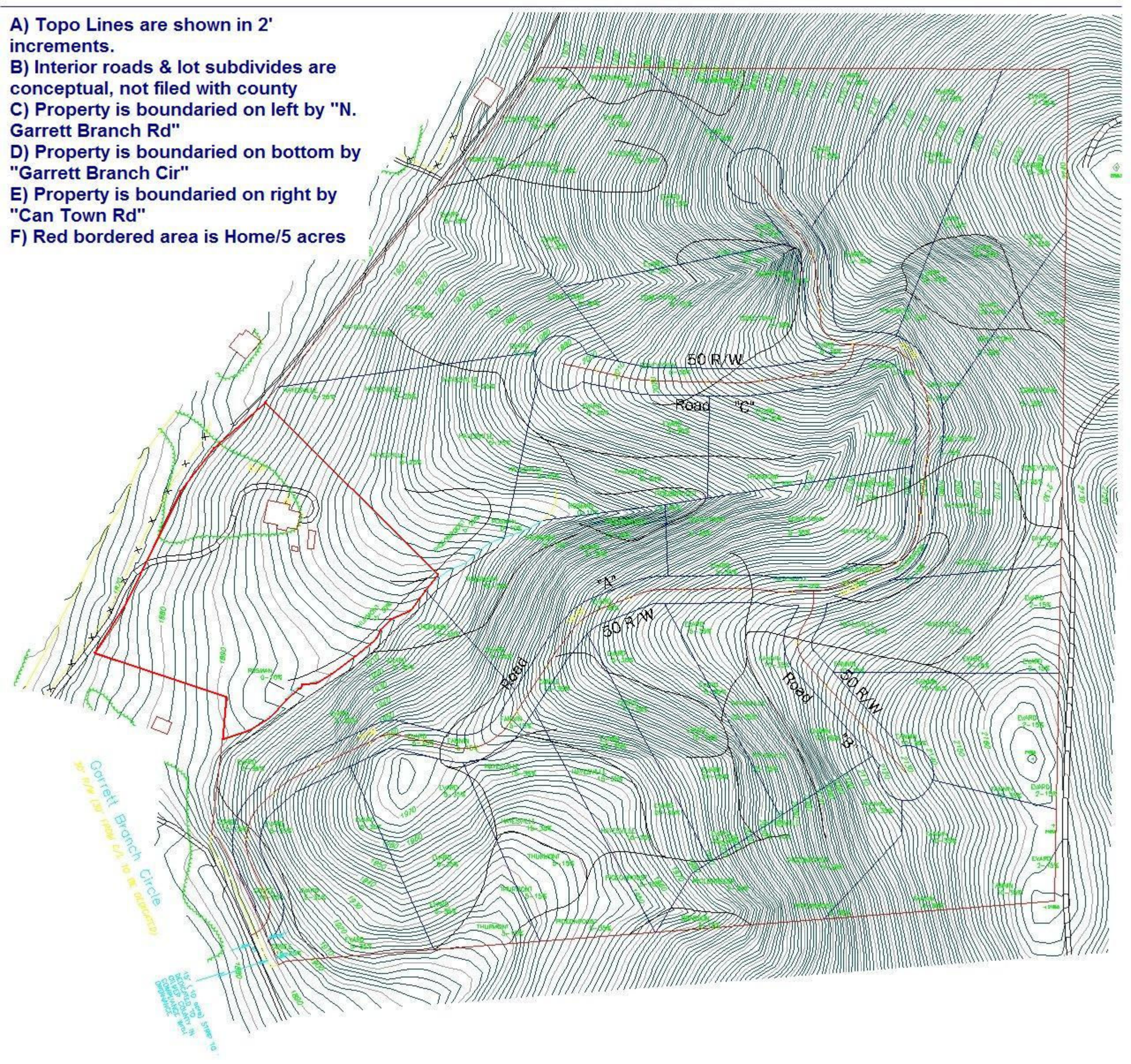


- A) Topo Lines are shown in 2' increments.
- B) Interior roads & lot subdivides are conceptual, not filed with county
- C) Property is bounded on left by "N. Garrett Branch Rd"
- D) Property is bounded on bottom by "Garrett Branch Cir"
- E) Property is bounded on right by "Can Town Rd"
- F) Red bordered area is Home/5 acres



Garrett Branch Circle

1/4" = 110' and 1/8" = 220'