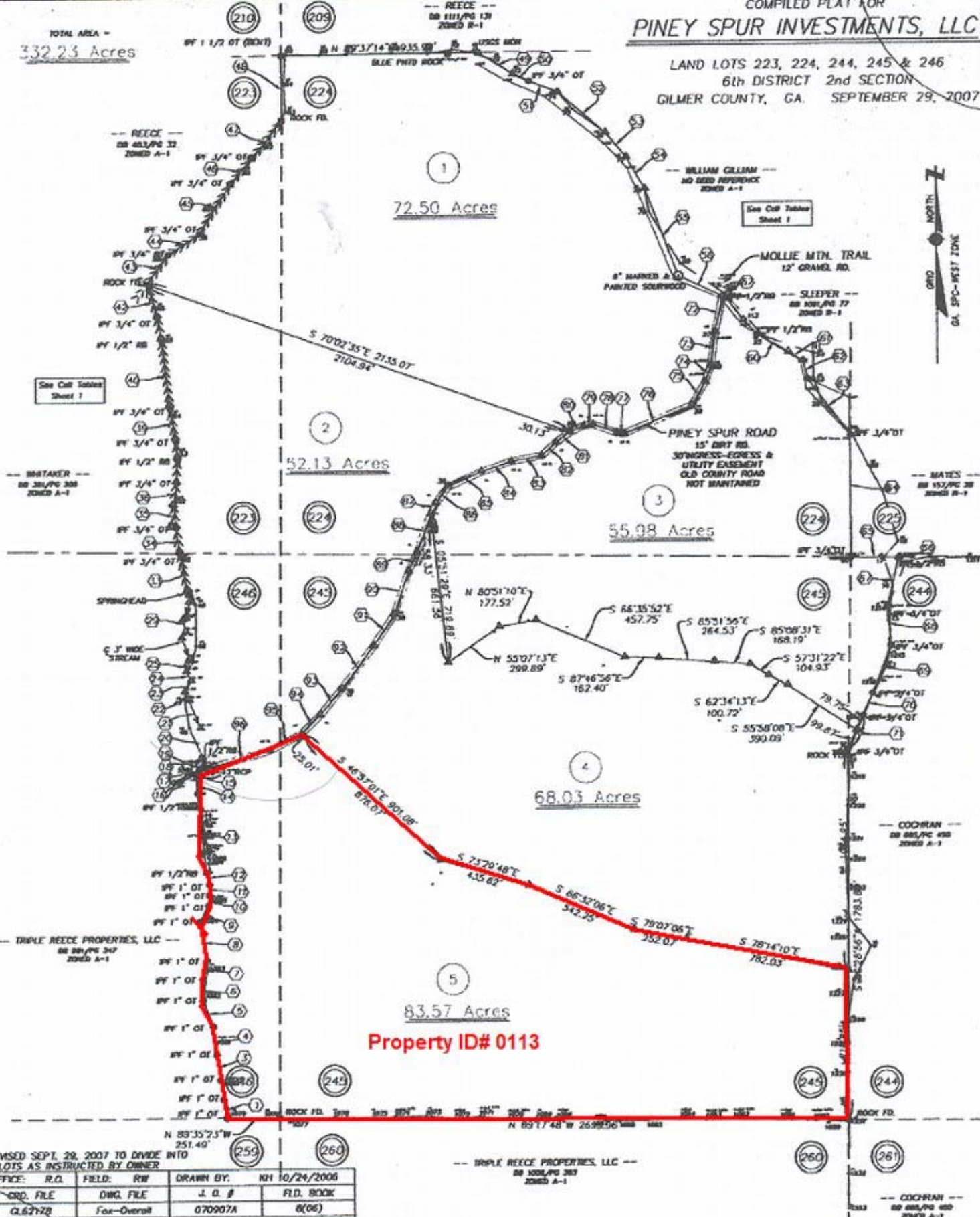


TOTAL AREA =
332.23 Acres

COMPILED PLAT FOR
PINEY SPUR INVESTMENTS, LLC

LAND LOTS 223, 224, 244, 245 & 246
6th DISTRICT 2nd SECTION
GILMER COUNTY, GA. SEPTEMBER 29, 2007



Property ID# 0113

REVISED SEPT. 29, 2007 TO DIVIDE INTO 5 LOTS AS INSTRUCTED BY OWNER

OFFICE: R.G.	FIELD: RW	DRAWN BY: NM	DATE: 10/24/2006
CRD. FILE: CL62172	DWG. FILE: Fox-Overall	J. D. # 070907A	F.L.D. BOOK: 8(06)

PREPARED BY
LANE S. BISHOP AND ASSOCIATES
LAND AND ENGINEERING SURVEYS
P.O. BOX 1505 BLUE RIDGE GA, 30513
PHONE: (706)632-3919 FAX: (706)632-6873
REGISTERED SURVEYOR GA R.L.S. #1575 & 2530
TN. R.L.S. #1324 M.C. R.L.S. #2745

